

SAMEDAY EXPRESS

Installation and
updating - October 2018

ZIPZAP Computers Limited

Lincoln
LN2 4WJ

Phone 01158-882830
Email support@zipzap.eu



Sameday Express

Initial installation

Go to www.zipzap.eu in your internet browser and on the first page click on the blue 'All Downloads Here' button.

Logistics software specialists to big, medium or small companies.
National and International.
"Multum in parvo"

Be the first to **review us on**  TRUSTPILOT

ALL DOWNLOADS
HERE

REMOTE SUPPORT
HERE

NEWS OF WORK IN
PROGRESS

ALL URGENT NEWS
HERE

TPN INVOICING &
SOAP COVER

REQUEST HELP
QUICK

LOADMASTER LINK
HERE

BULLETIN BOARD
HERE

SAMEDAY EXP LINK
HERE

This will open a further window. Where you should double-click on the word 'Shop'

[\[Return to main page\]](#)

ZipZAP Computers Limited - Available downloads

Files in <http://www.zipzap.eu/downloads>:

- [Eclipse](#) 4KB
- [EntFreight](#) 4KB
- [TpnIreland](#) 4KB
- [README.txt](#) 534B
- [ESCRO](#) 4KB
- [Halcion](#) 4KB
- [Nightfreight](#) 4KB
- [JMA](#) 4KB
- [Citipost](#) 4KB
- [Techlogico](#) 4KB
- [MandG](#) 4KB
- [WingsTransport](#) 4KB
- [Xpression](#) 4KB
- [Penstream](#) 4KB
- [YorkshireFreight](#) 4KB
- [Support](#) 4KB
- [Mitchells](#) 4KB
- [FreeSoftware](#) 4KB
- [TntRetail](#) 4KB
- [Utilities](#) 4KB
- [UPS](#) 4KB
- [TpnTest](#) 4KB
- [MCM](#) 4KB
- [Android](#) 4KB
- [Logic](#) 4KB
- [Translink](#) 4KB
- [Shop](#) 4KB
- [TpnUK](#) 4KB
- [HelpSheets](#) 4KB
- [YPO](#) 4KB



This will open a further window where you should double-click on the words 'SamedayExpress'.

[\[Return to main page\]](#)

ZipZAP Computers Limited - Available downloads

Files in <http://www.zipzap.eu/downloads/Shop>:

- [Multilab](#) 4KB
- [LogisticsManager](#) 4KB
- [Hazchem](#) 4KB
- [Docutrak](#) 4KB
- [Mailman](#) 4KB
- [Warehouse](#) 4KB
- [SamedayExpress](#) 4KB
- [Terms and Conditions on the sale of goods and services.pdf](#) 206KB
- [CnMbookWindowsCE](#) 4KB
- [Malwarebytes](#) 4KB
- [DynamicTpnImport](#) 4KB
- [Citipost](#) 4KB
- [WindowsCE](#) 4KB
- [LoadmasterExtreme](#) 4KB
- [PatTest](#) 4KB
- [UkMail](#) 4KB
- [Microhub](#) 4KB
- [PLATO](#) 4KB
- [Labprint](#) 4KB
- [ParcelCustomerSystem](#) 4KB
- [LoadmasterEnterprise](#) 4KB
- [Comodo](#) 4KB
- [ParcelTrak](#) 4KB
- [FuelDelivery](#) 4KB
- [RemoteImplant](#) 4KB
- [TpnAdvantage64](#) 4KB
- [TpnLink](#) 4KB
- [Spooly](#) 4KB
- [MobileSolutions](#) 4KB



This will open a further window where you should double-click on the word 'SameDayExpress.EXE'

[\[Return to main page\]](#)

ZipZAP Computers Limited - Available downloads

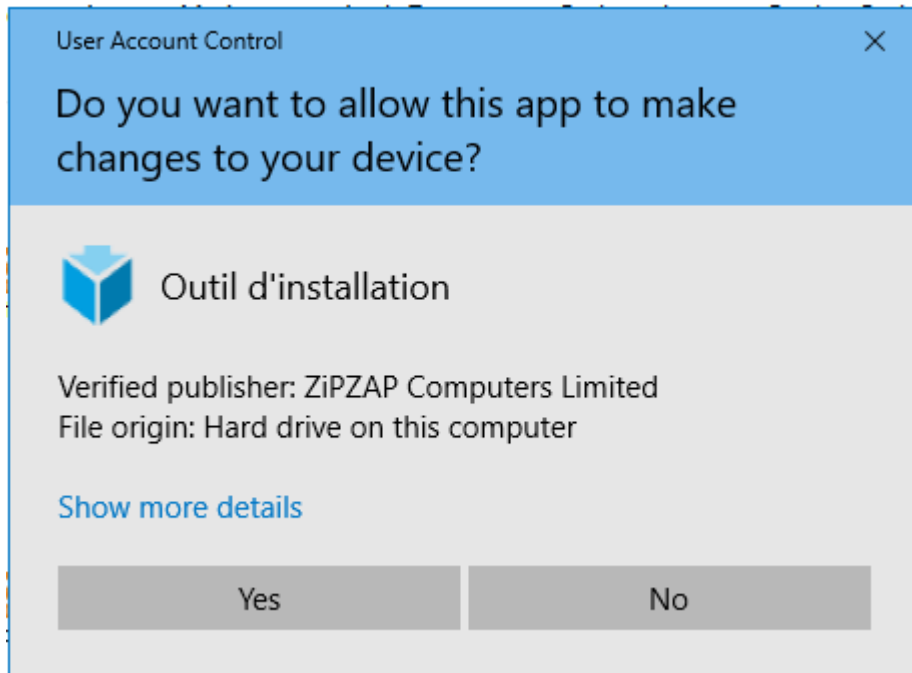
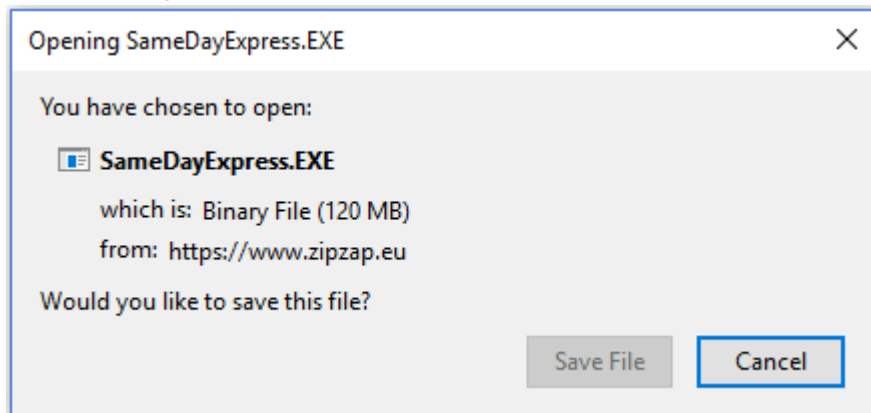
Files in <http://www.zipzap.eu/downloads/Shop/SamedayExpress>:

- [OldSameDayExpress.EXE](#) 120MB
- [DummyData](#) 4KB
- [Videos](#) 4KB
- [Help](#) 4KB
- [sd.htm](#) 295B
- [SameDayExpress.EXE](#) 120MB
- [Manuals](#) 4KB
- [updates.txt](#) 1KB
- [SAGE DATA IMPORT.pdf](#) 798KB
- [Sameday Express - multiple data.pdf](#) 87KB
- [Android](#) 4KB
- [Additions](#) 4KB
- [SupportFiles](#) 4KB
- [sd.jpg](#) 67KB
- [SAME](#) 4KB

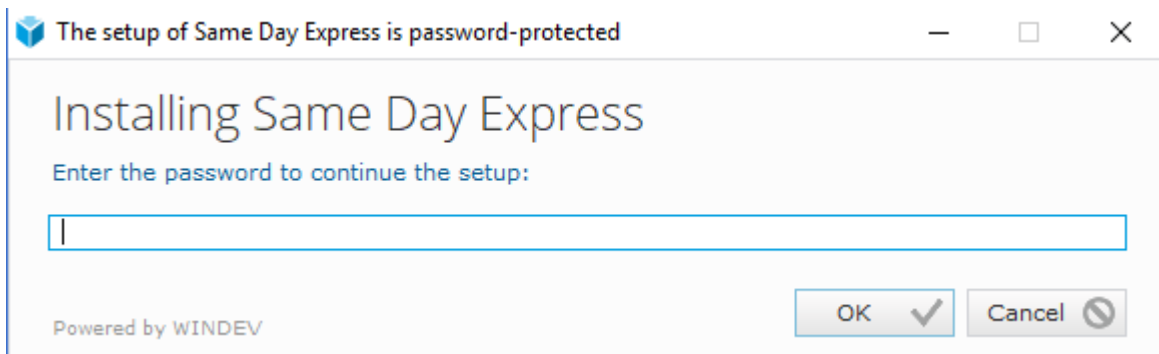


Depending on your browser you will get various options. Effectively you need to SAVE and then RUN this.

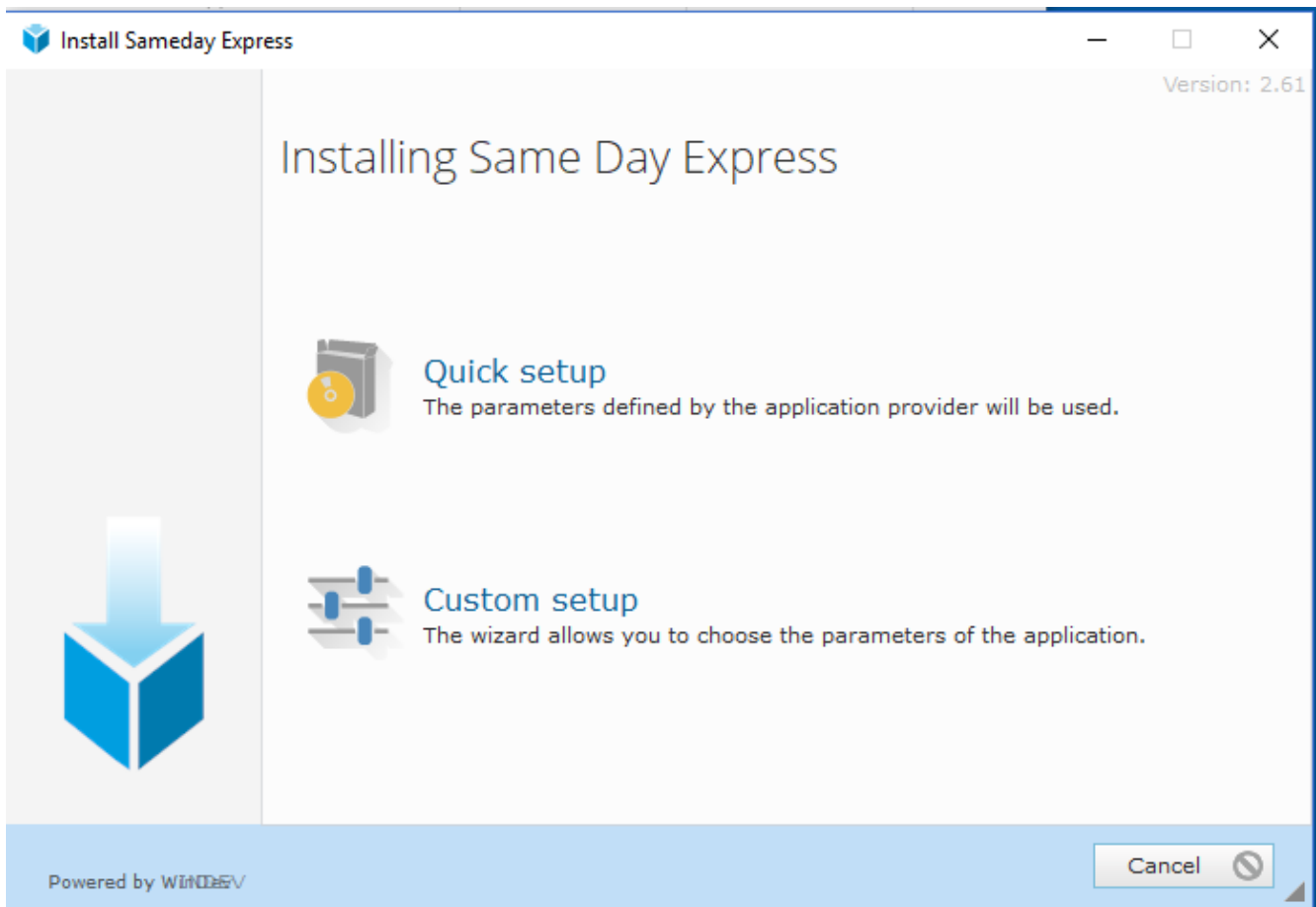
Next you will get this screen. It is asking for permission to load. Answer YES. Note it says 'Verified publisher'.



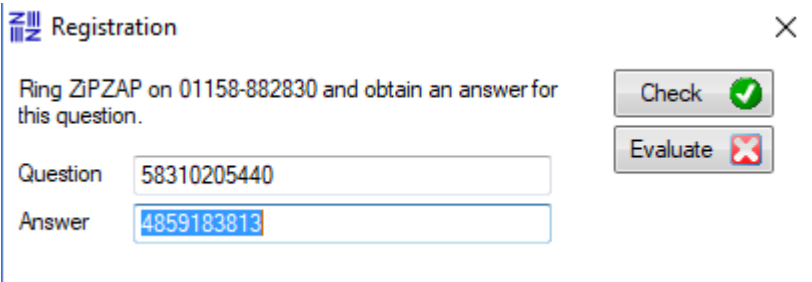
This will open a message box where you should enter the latest installation password and Ok.



This will open a further message box where you get two options. Choose Quick Setup for a first time install. This is the normal option. Use Custom if you are updating and have your data files elsewhere than on this computer and it is the first computer being updated. (Further details later)



If this is a new install then you will get a message box asking for the answer to a numerical question. Ring us or email for this.



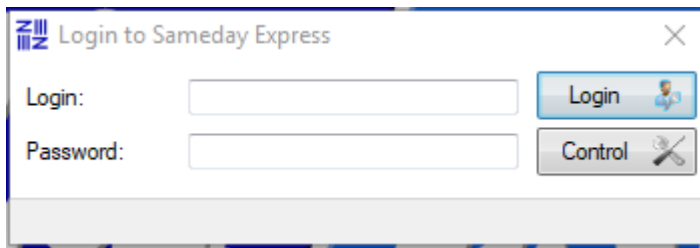
The image shows a Windows-style dialog box titled "Registration" with a close button (X) in the top right corner. The text inside the dialog reads: "Ring ZIPZAP on 01158-882830 and obtain an answer for this question." Below this text are two input fields: "Question" containing the number "58310205440" and "Answer" containing the number "4859183813". To the right of the input fields are two buttons: "Check" with a green checkmark icon and "Evaluate" with a red X icon.

The installation continues. On a new installation your current data directory will default to :-

C:\ProgramData\ZipZap Computers\Same Day Express

Note that the ProgramData folder may be 'hidden' on your system by Windows and not visible in Explorer.

You will now be asked to Login.

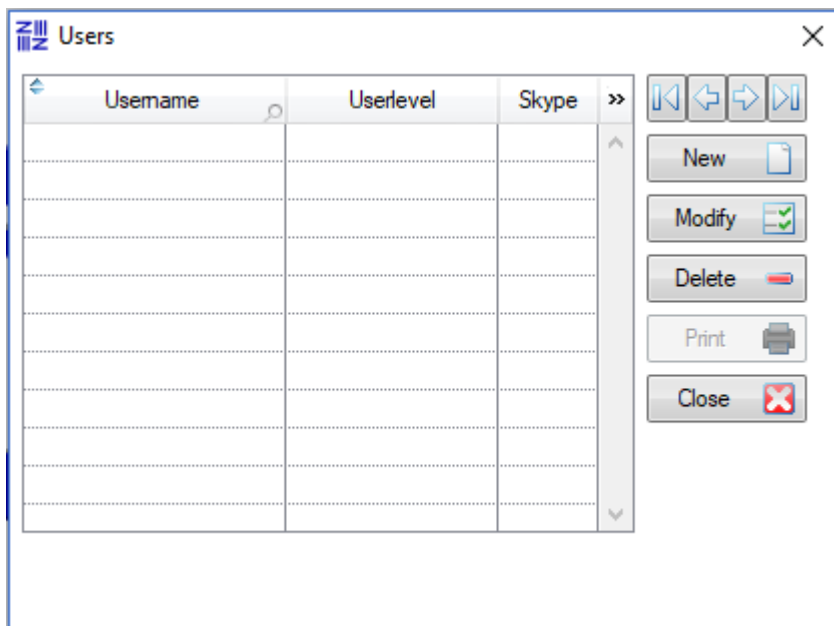


Zipzap Login to Sameday Express

Login: Login

Password: Control

If this is the first installation then enter **MANAGER** as a user and **borg** as a password. You will get a user table.



Zipzap Users

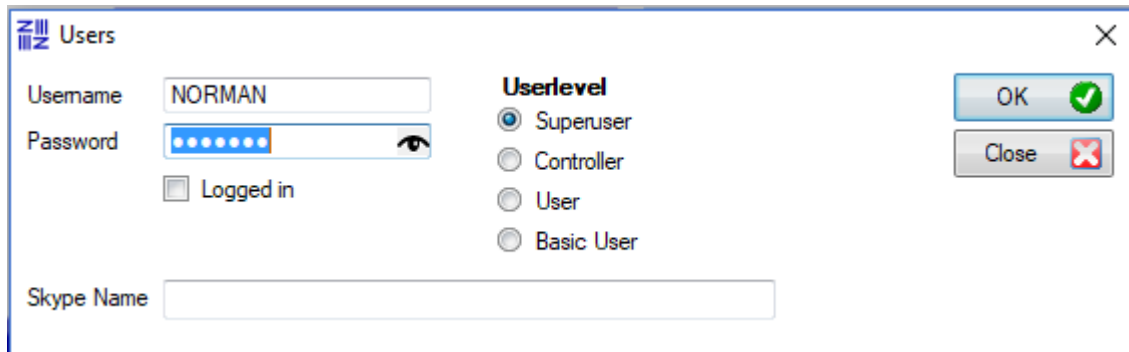
Username	Userlevel	Skype	>>

New Modify Delete Print Close

Click on New and create a user.

Initially it is recommended that you create an open system, restricting users later by altering their access. Click on the 'Tick all' button to allow full access.

To restrict access, simply remove ticks from options.



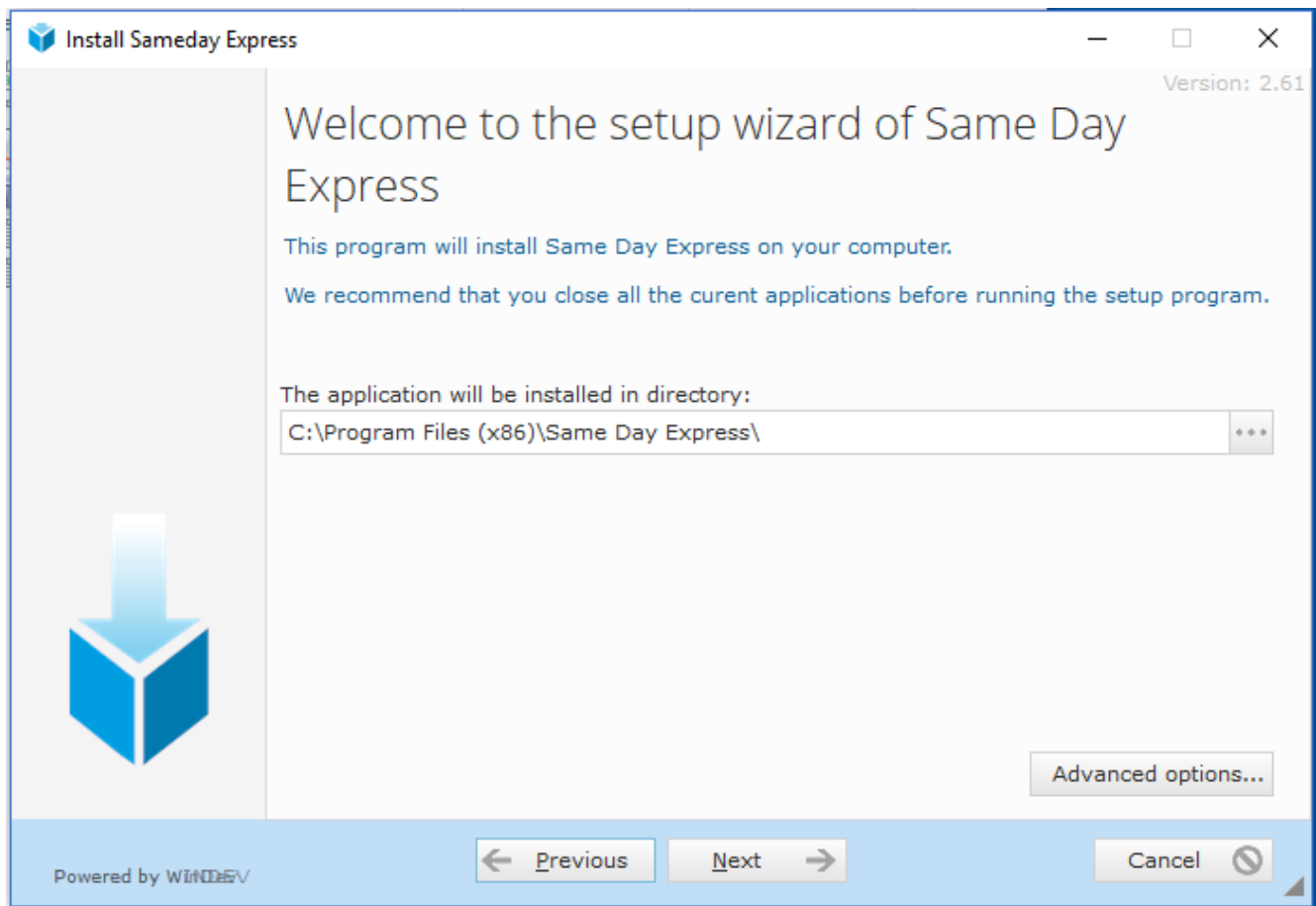
Click on OK to save. Close the next table.

You can now log in.

Custom installation

After choosing Custom you will get this screen where you should click on the 'Advanced options' button. This allows you to update any data file changes on directories that are not on this computer or in a non-standard location.

Get all users to log out before updating the first computer.



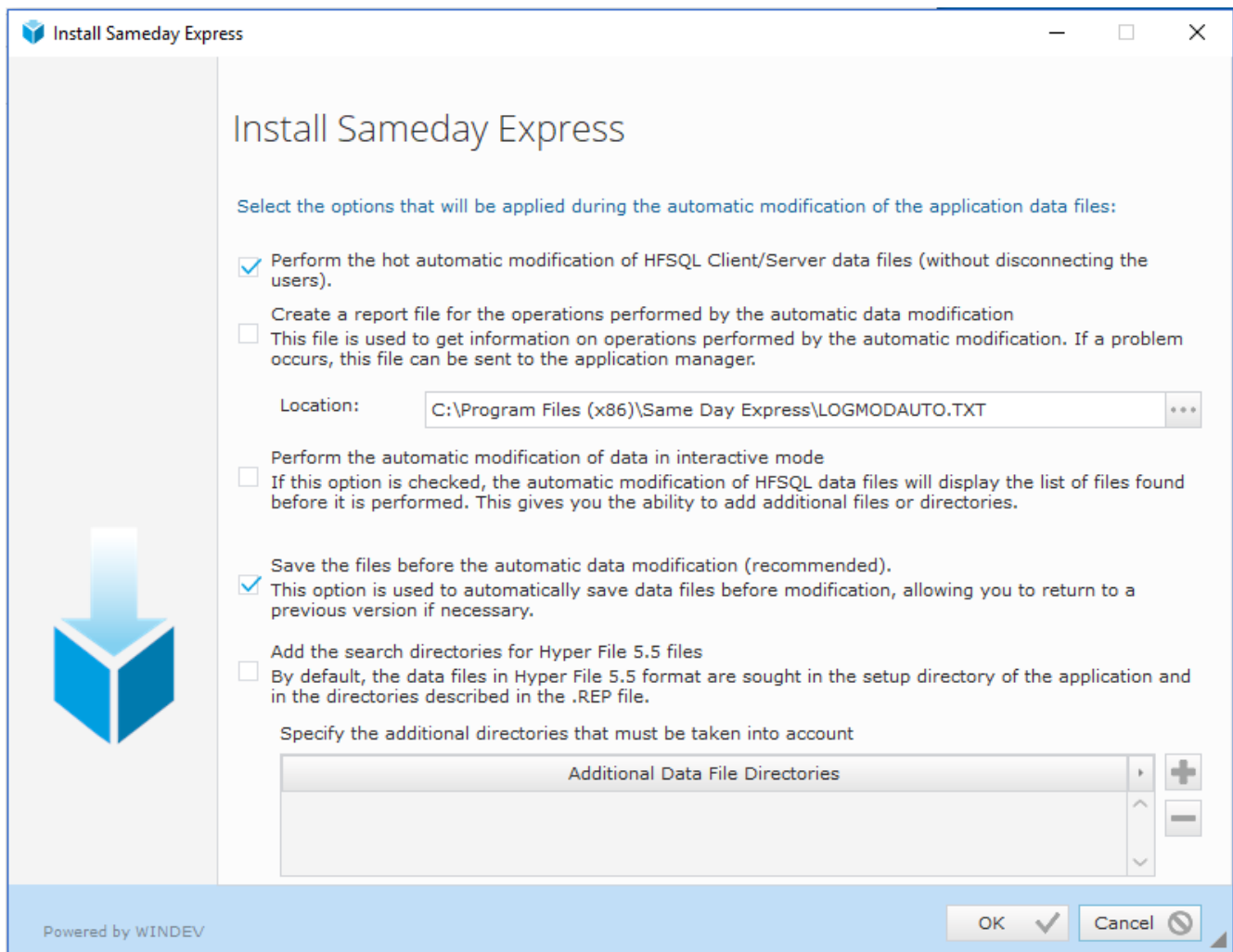
Note: The Sameday application MUST be installed into

C:\Program Files (x86)\Same Day Express\ (If a 64 bit operating system)

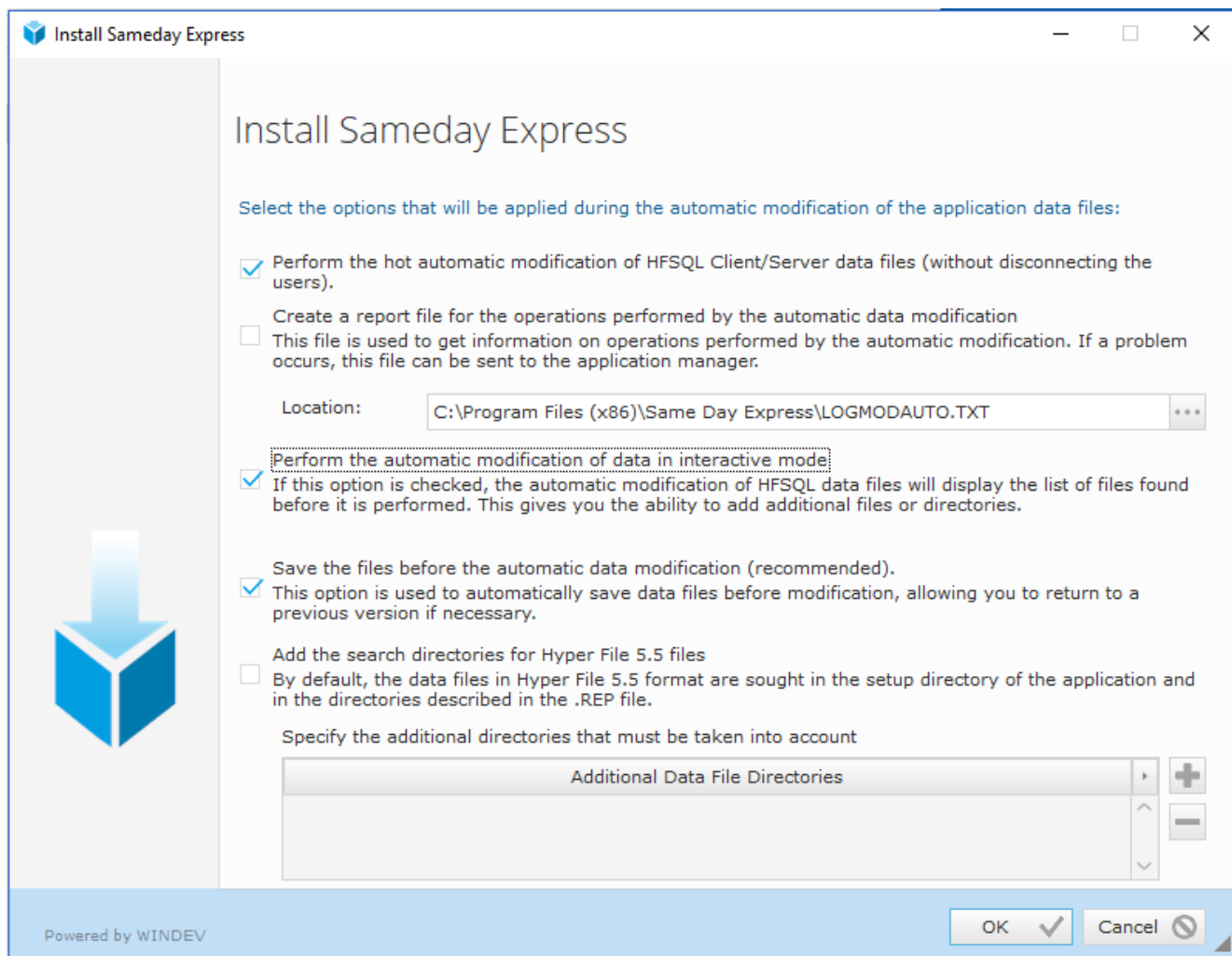
Or

C:\Program Files\Same Day Express\ (If a 32 bit operating system)

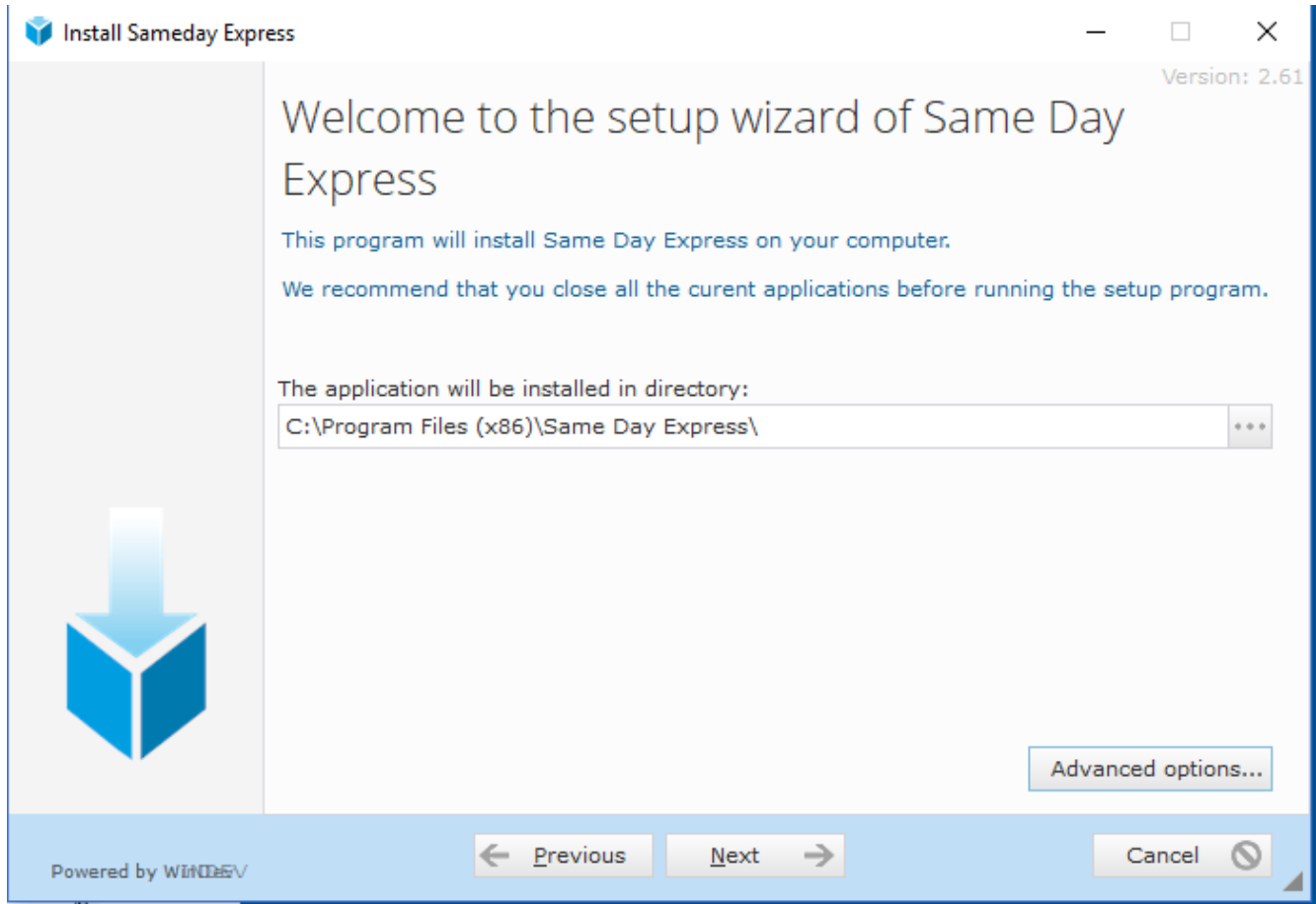
Note the option of 'perform the automatic modification of data in interactive mode'.



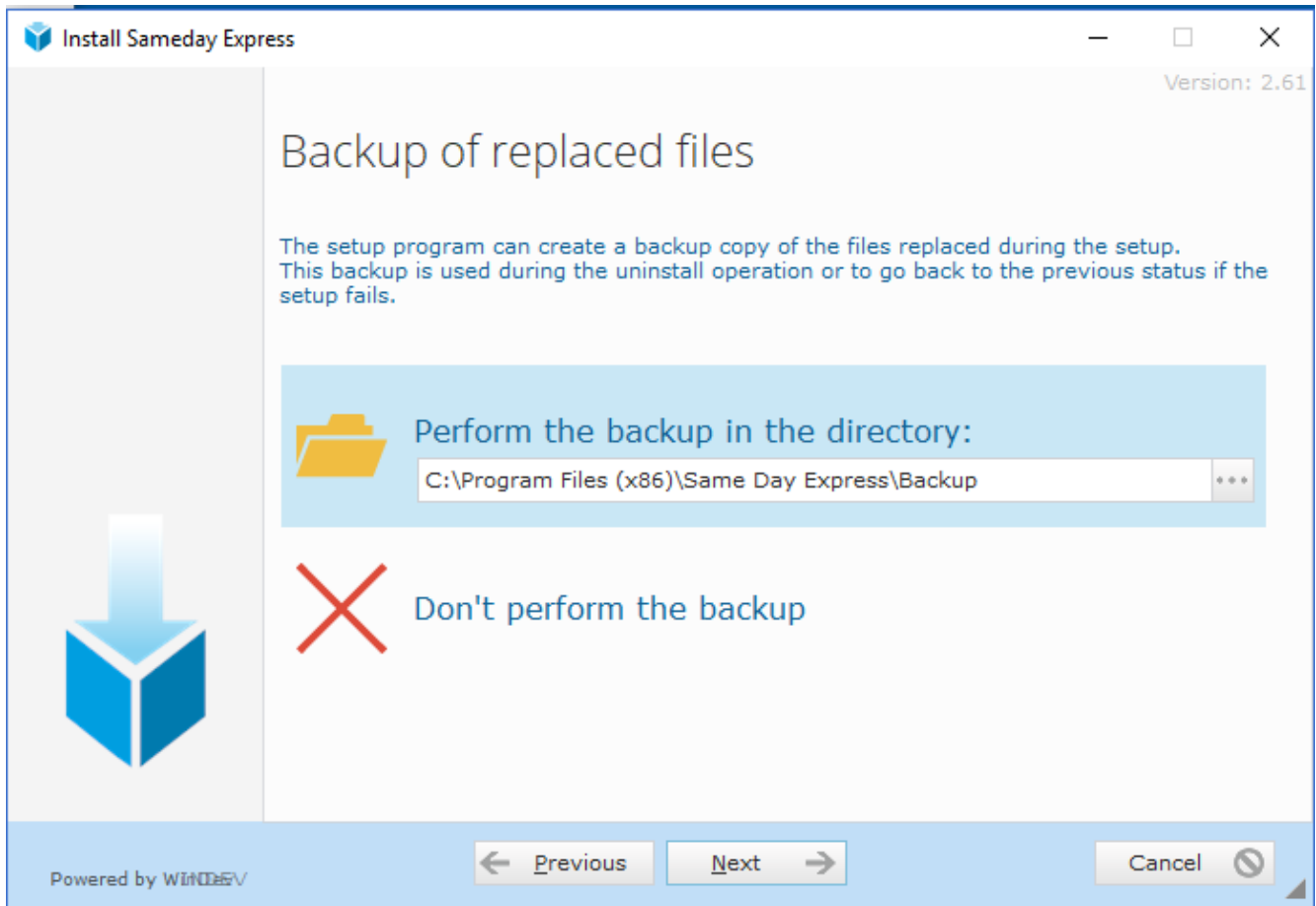
Tick this option and Ok.



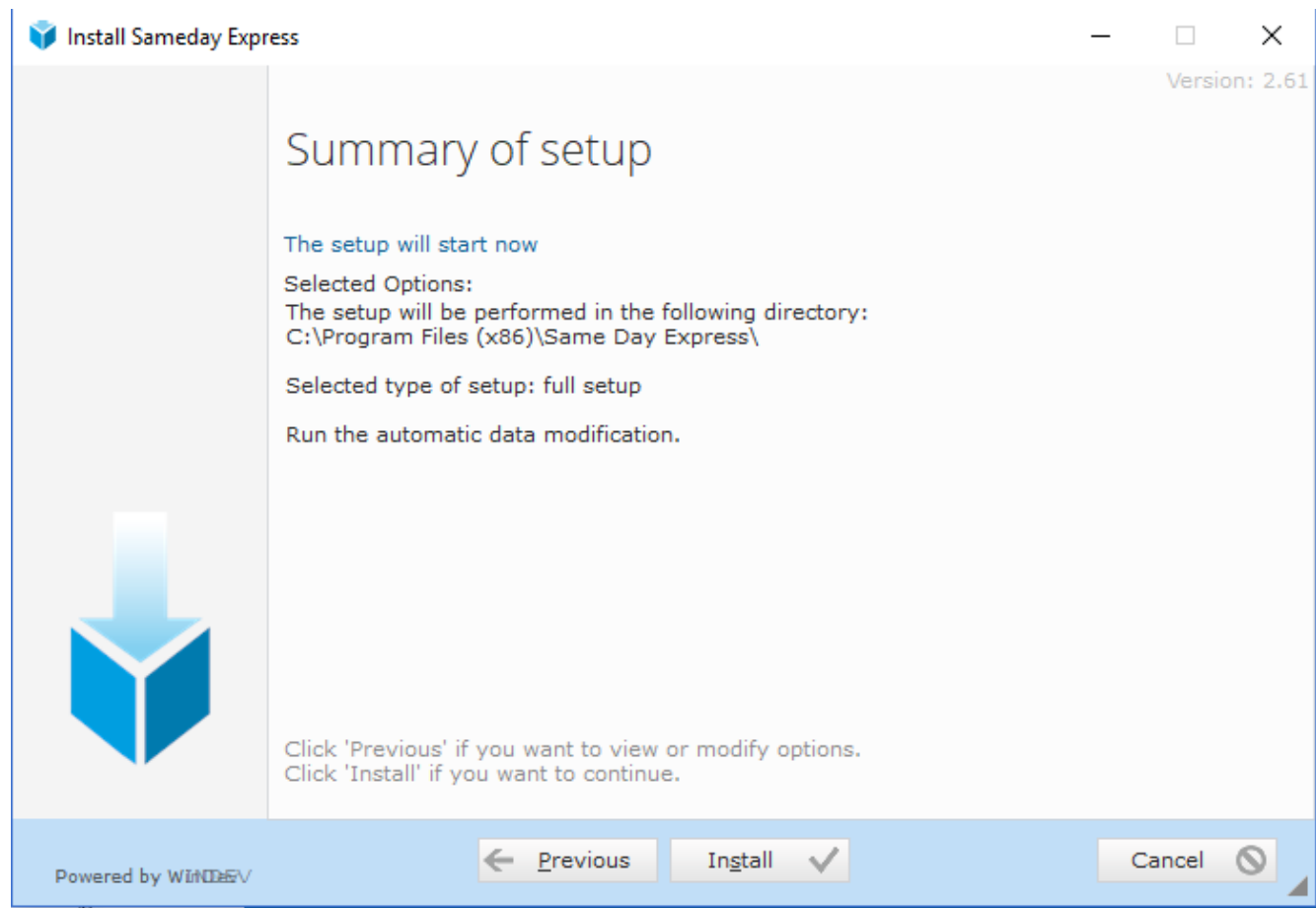
It will continue the installation.



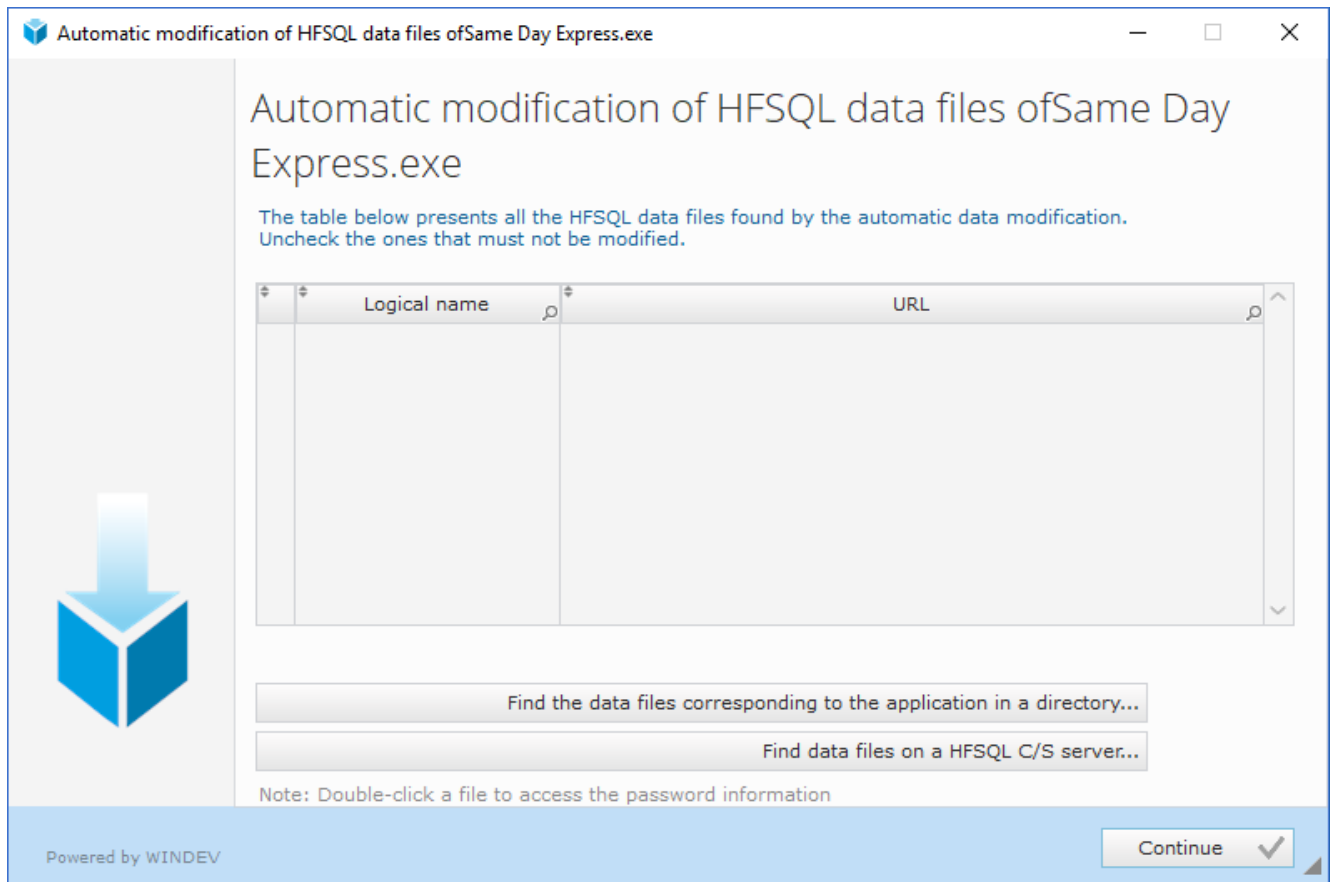
You will be asked if you optionally want to back up files replaced by the update. The normal answer is 'Don't perform the backup'.



It will then confirm the proposed actions. Click on the Install button.



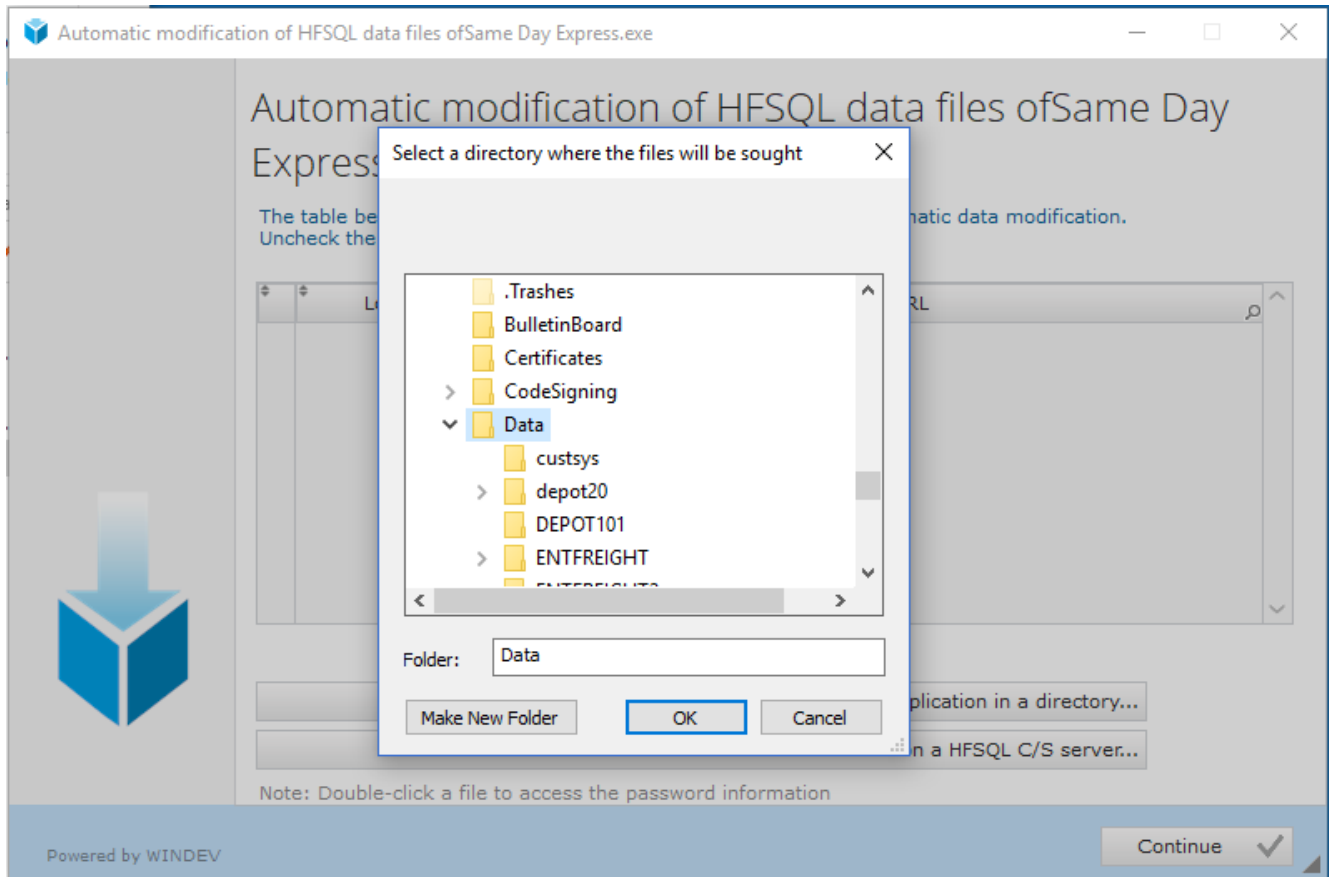
You will then be asked for other directories that contain data.



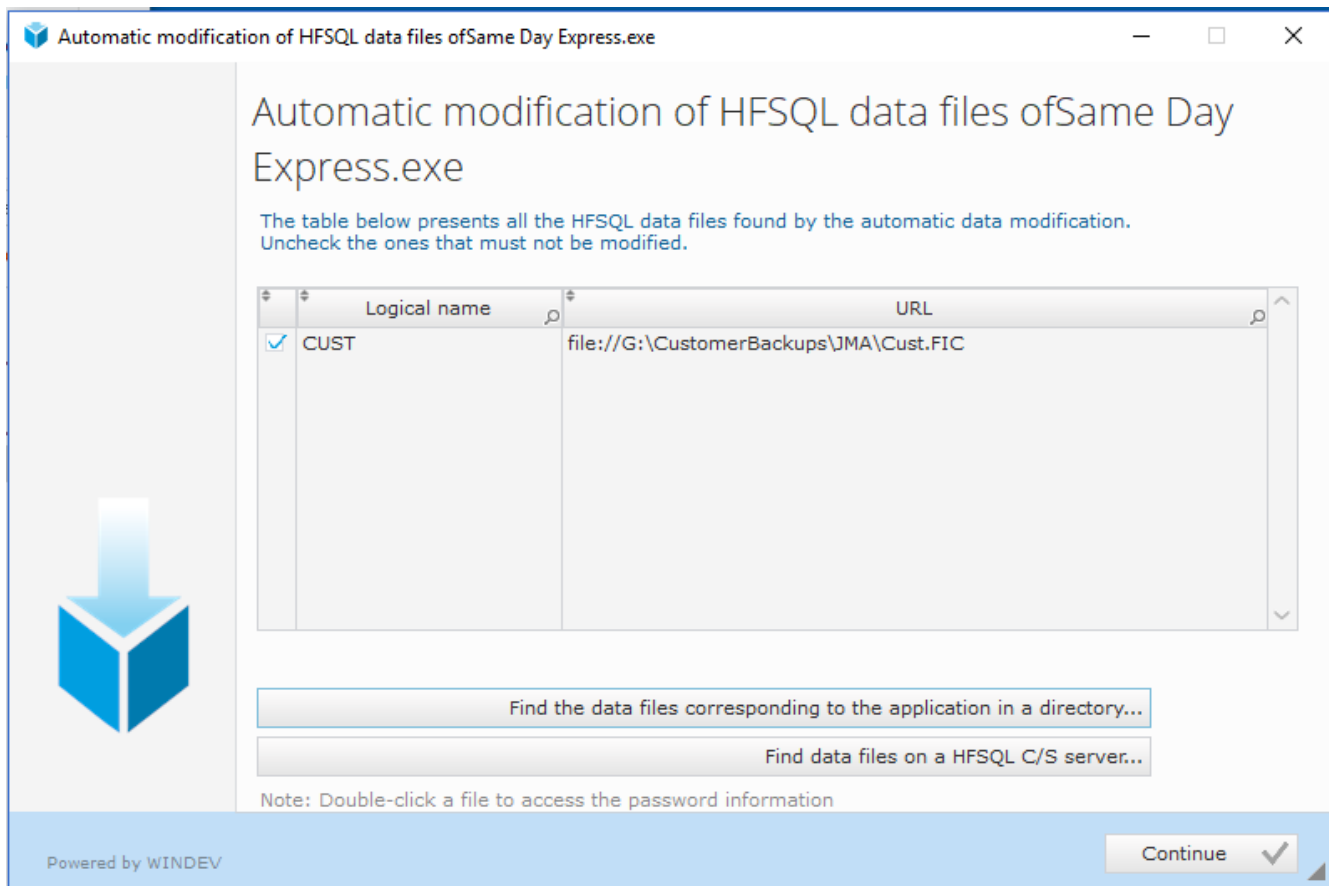
Choose the option of 'Find the data files corresponding to the application in a directory'.

Select the location where your main data files reside and OK.

Note this normally appears in the bottom left of any open program.



It will check if any files need updating and will advise you what they are.



Just click on the Continue button.

Note that when you have done this on the first computer then you can use the Quick setup on any other computers.

At the end you will get this screen.

